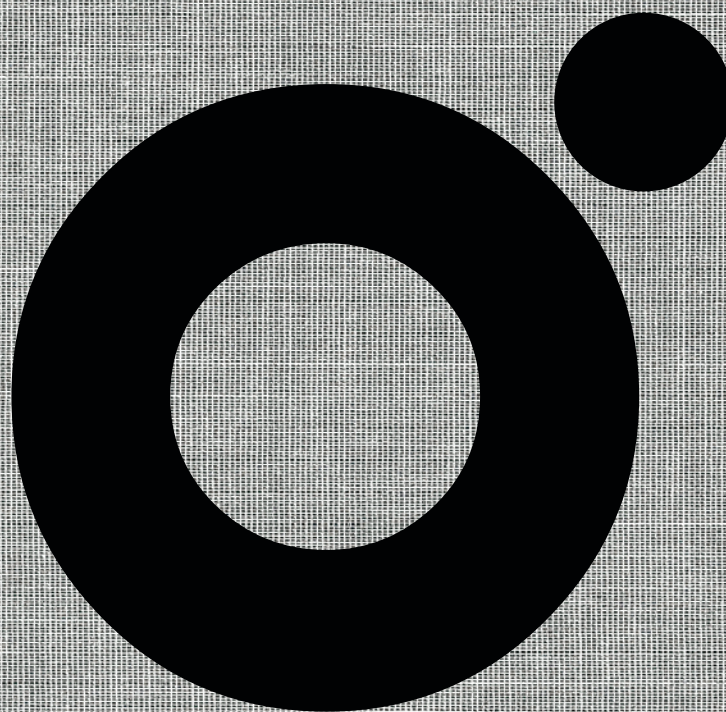


OLEV

SOLO LED  
SOLO DESIGN



NEWS 18







# OLEV

SOLO LED  
SOLO DESIGN



# NEWS 18

---

SOLO MADE IN ITALY



# UNA LUCE DI DESIGN SU MISURA PER I TUOI SPAZI

Olev. Solo LED, Solo Design è un brand italiano di lampade e corpi illuminanti di design con tecnologia LED, specializzato in soluzioni custom.

Le novità del catalogo 2018 presentano le innovazioni frutto del percorso di ricerca intrapreso da Olev: una tecnologia per l'illuminazione che unisce tecnologia, design e teorie avanzate sul benessere.

## **ITALIAN DESIGNER LIGHTING, TAILORED TO YOUR ENVIRONMENTS**

*Olev. Only LED, Only Design is an Italian brand of designer LED lighting fixtures that is highly specialised in bespoke lighting solutions.*

*The new products of the 2018 catalogue present the innovations of Olev's lighting technology that brings together advanced lighting systems, scientific studies on well-being and design.*

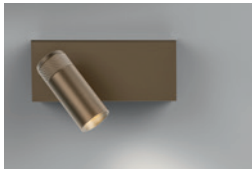




SOMMARIO CONTENTS  
Ordine alfabetico *Alphabetical order*



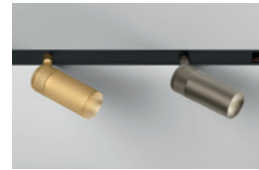
**ANDROMEDA**  
P. 4



**EYE 35 230V**  
base rettangolare  
P. 28



**EYE 35 24V**  
base tonda  
P. 26



**EYE 35 48V TRACK**  
P. 22



**GENTLEMAN**  
P. 8



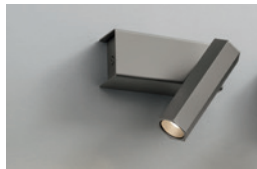
**LONGUETTE**  
P. 16



**POLY ESAGONO  
DTW**  
P. 42



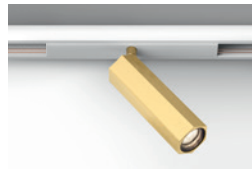
**POLY ESAGONO  
SOUNDLESS**  
P. 38



**SHINE SPOT 230V**  
base rettangolare  
P. 32



**SHINE SPOT 24V**  
base tonda  
P. 33



**SHINE SPOT  
48V TRACK**  
P. 34



**SHINE VERTICAL  
48V TRACK**  
P. 36



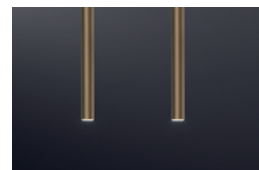
**SHINE VERTICAL  
PLUMAGE 48V TRACK**  
P. 36



**STEM LIGHT**  
P. 10

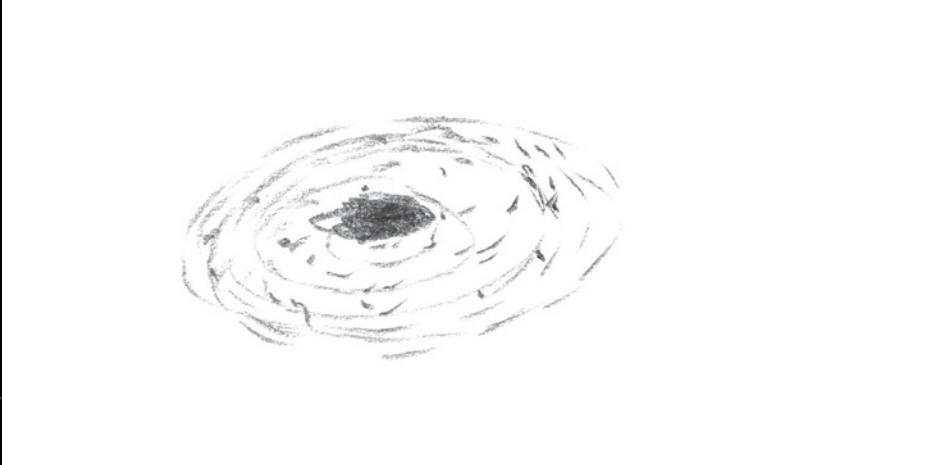
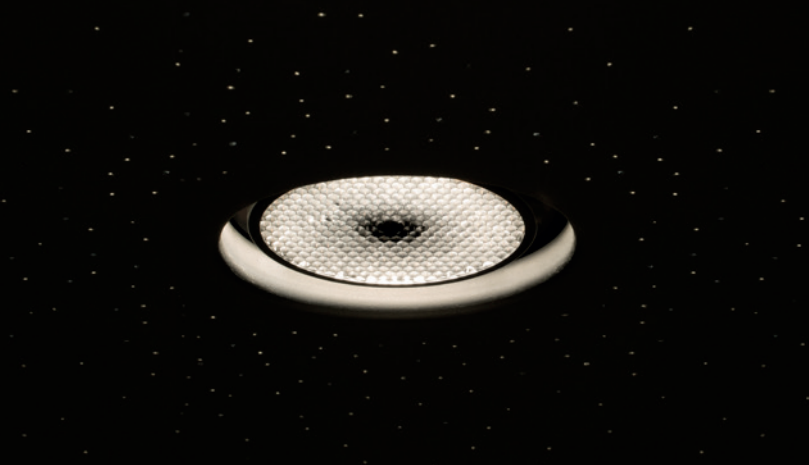


**STEM LIGHT  
DIFFUSED**  
P. 14



**TUBE 24V TRACK**  
P. 18

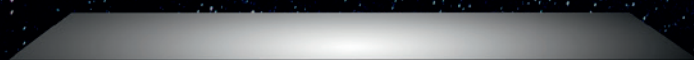
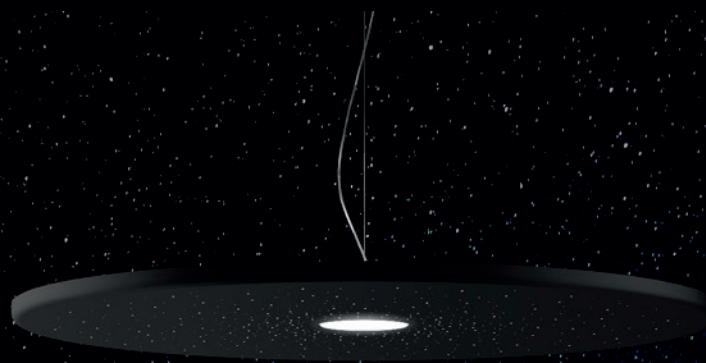




## ANDROMEDA sospensione

Design WE DON'T DESIGN + Davide Lanfranco, 2017

La sorgente di luce diretta è dotata di un sistema di ottiche intercambiabili.  
*The lamp comes with a system of interchangeable optics for the direct light source*







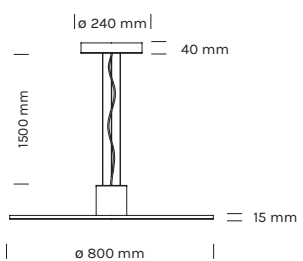
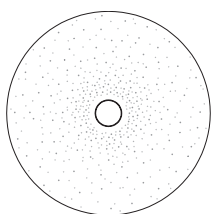
VIDEO

Con la nuova lampada a LED Andromeda di Olev puoi modellare il fascio di luce da proiettare sul tavolo. La sorgente di luce diretta è dotata di un sistema di ottiche intercambiabili, che ti consente di passare da un fascio di luce concentrato a fasci più ampi. Ti basterà scegliere l'ottica adatta alle tue esigenze e applicarla alla lampada. Il montaggio dell'ottica è facile e veloce, grazie a una tecnologia magnetica. E le possibilità di dare un tocco personale al tuo stile di illuminazione non sono finite qui.

*With the new Andromeda LED lamp by Olev, you can now choose the width of the light beam you want on the table and switch from bright, even lighting to a more focused light that creates more intimacy. The lamp comes with a system of interchangeable optics for the direct light source. To achieve a broader or a narrower light beam, you just need to choose the appropriate optic. The beam will adjust accordingly! Changing the optics is fast and easy thanks to the embedded magnets. You can do it anytime and as often as you want to. And speaking of customization options, there's more.*



**ANDROMEDA**  
sospensione



**9110**

(Down) 16W LED - 1000 lm - 3000K CRI 95 ottica 40°  
(Up) 36W LED - 1600 lm - 3000K CRI 95 ottica diffusa



**OT-25**

Ottica 25° - montaggio magnetico

**OT-36**

Ottica 36° - montaggio magnetico

**CTO-2700**

Filtro 2700°K - montaggio magnetico

Alimentatore incluso Driver included

Filtro Honeycomb antiglare incluso. Honeycomb antiglare optic included.

**NC** Nero cosmico Cosmic black



Con Andromeda puoi variare anche il colore della luce, verso il basso, trasformando la luce bianca calda a 3000 K in luce calda a 2700 K, tramite un apposito filtro magnetico.

Il tutto con uno splendido effetto cielo stellato sulla superficie della lampada, mentre la sorgente di luce indiretta garantisce sempre una luminosità ideale per il comfort visivo.

*Andromeda lets you set the colour temperature of the light, so you can go from warm white (3000 K) to warm (2700 K).*

*All of this with a splendid starry night sky effect on the external surface of the lamp, while the indirect light source makes for great ambient lighting.*





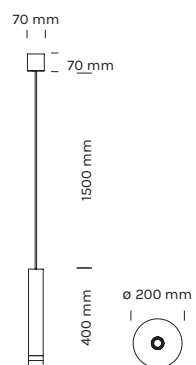
# GENTLEMAN sospensione



Design WE DON'T DESIGN + Davide Lanfranco, 2017

La reinterpretazione di un classico tramite l'aggiunta di un elemento iconico, essenziale e fortemente caratterizzante.

*A reinterpretation of a classic by adding an iconic, essential and strong element.*





**9120** 1 x 6,3W LED GU10 - 230 Vac - 430 lm - 3000K CRI 90 - 60°    
Lampadina inclusa *Bulb included*

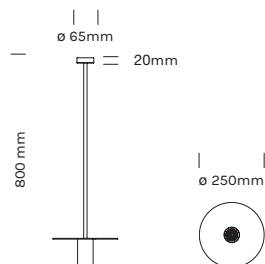
**NC** Nero cosmico *Cosmic black*



# STEM LIGHT sospensione

Design Luca Toniolo 2017

Stem Light è una sospensione a LED in ferro dallo stile minimal con fascio di luce diretto.  
*Stem Light is a minimalist iron ceiling LED lamp in a down-light version to illuminate a specific area.*



**2520** 1 x 6,3W LED - GU10 230V - 430lm - 2700K CRI90  
Lampadina inclusa Bulb included



**NE** Nero Black





STEM LIGHT sospensione







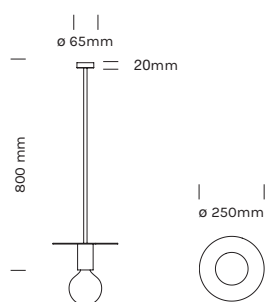


# STEM LIGHT DIFFUSED sospensione

Design Luca Toniolo 2017

Stem Light è una sospensione a LED in ferro dallo stile minimal per illuminare l'ambiente in maniera diffusa.

Stem Light is a minimalist iron ceiling LED lamp in a light bulb version, ideal for ambient lighting.



**2510** 1 x E27 LED

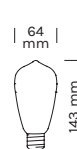
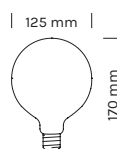
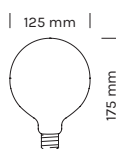


**NE** Nero Black

**BULB 1**  
Lampadina globo 7W E27 806  
lm **2700K** trasparente CRI 80  
230 Vac  
Sphere 7W E27 806 lm **2700K**  
transparent CRI 80 230 Vac bulb

**BULB 2**  
Lampadina globo vintage  
6,5W E27 630lm **2200K**  
ambra CRI 80 230 Vac  
Sphere vintage 8W E27  
630 lm **2200K** amber CRI 80  
230 Vac bulb

**BULB 3**  
Lampadina peretta vintage  
8W E27 630 lm **2200K** ambra  
CRI 80 230 Vac  
Vintage 8W E27 630 lm **2200K**  
amber CRI 80 230 Vac bulb









## LONGUETTE sospensione

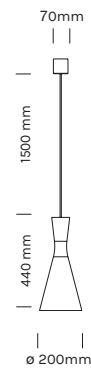
Sospensione a LED utilizzabile singolarmente o in combinazione con più taglie. Finitura in oro ricco o in bronzo. Fascio di luce verso il basso.

*A LED pendant light that can be used as a single lamp hung on its own, or as a cluster of different sizes. Gold or bronze finishes available.*

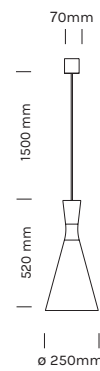




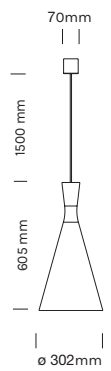
**2050**



**2051**



**2052**



**2050** 1 x 10W LED E27 - 230 Vac - 940 lm - 3000K CRI 90

**2051** 1 x 10W LED E27 - 230 Vac - 940 lm - 3000K CRI 90

**2052** 1 x 10W LED E27 - 230 Vac - 940 lm - 3000K CRI 90

Lampadina inclusa Bulb included

**OR** Oro ricco Rich gold

**BZ** Bronzo verniciato Painted bronze

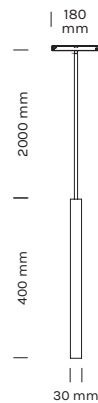




## TUBE 24V TRACK sospensione

Sospensione a LED cilindrica dal design minimale e con un diametro minimo di soli 3 cm. La luce è proiettata solo verso il basso per creare un fascio idoneo ad illuminare un tavolo di un ristorante. Il posizionamento della lampada avviene tramite un sistema a binario con attacco magnetico, per spostarla nell'ambiente in modo semplice e veloce senza la necessità di qualsiasi strumento o personale specializzato.

*Minimal design LED pendant lamp in the shape of a cylinder with a diameter of only 3cm. The exclusive downward projection creates a light beam that is ideal for the illumination of a table at the restaurant. The positioning of the lamp is carried out through a track system with magnetic coupling in a quick and easy way, without the need for any specific tool or expert staff.*



**6071** 1W LED - 48V - CRI 90  
Alimentatore incluso Driver included



**W** 3000K 93 lm **25** Light Beam 25°

**BI** Bianco White

**GR** Grigio Grey

**NE** Nero Black

**RU** Ruggine Rust

**FN** Ferro verniciato trasparente opaco Iron

**BN** Brunito nuvolato Burnished

**RF** Rame fiammato Old copper

**CR** Cromo Chrome

**NS** Nichel spazzolato Brushed nickel

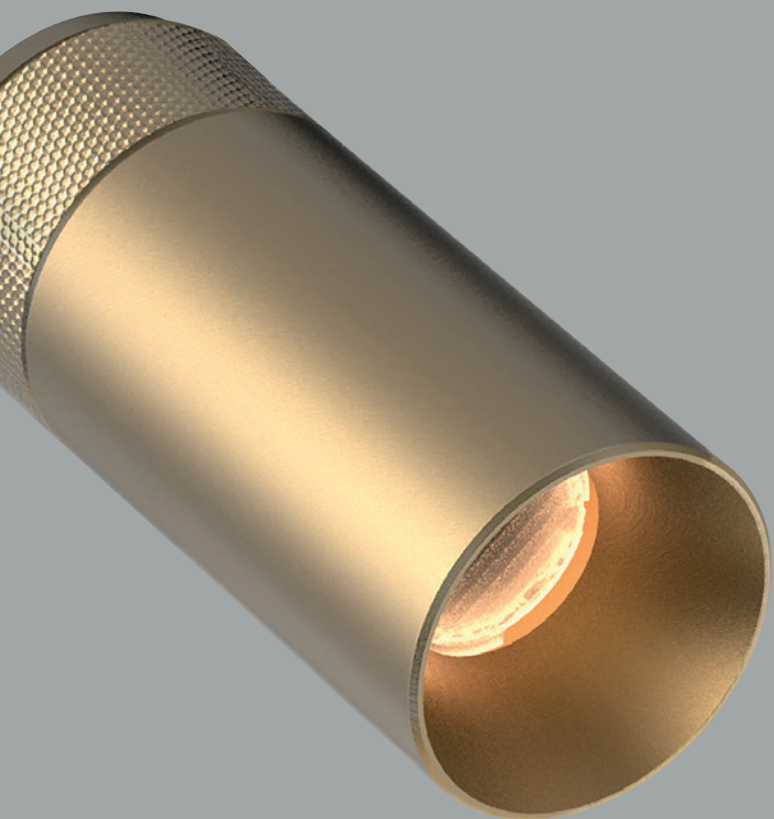
**TI** Titanio Titanium

**BV** Brunito Verniciato Painted burnished

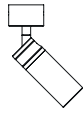
**BZ** Bronzo verniciato Painted bronze



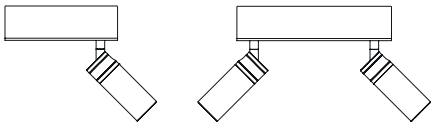




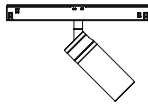
**EYE 35**



**EYE 35 24V**  
spot singolo base tonda



**EYE 35 230V**  
singolo e doppio base rettangolare



**EYE 35 48V TRACK**

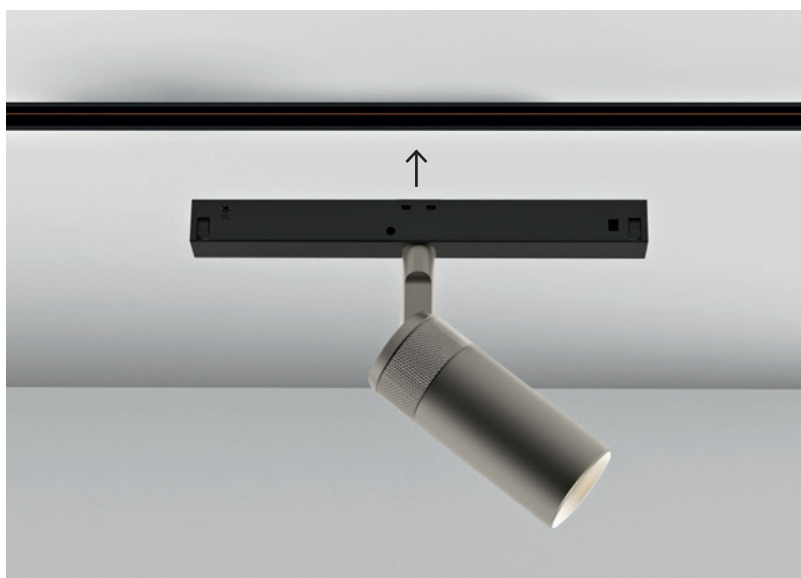
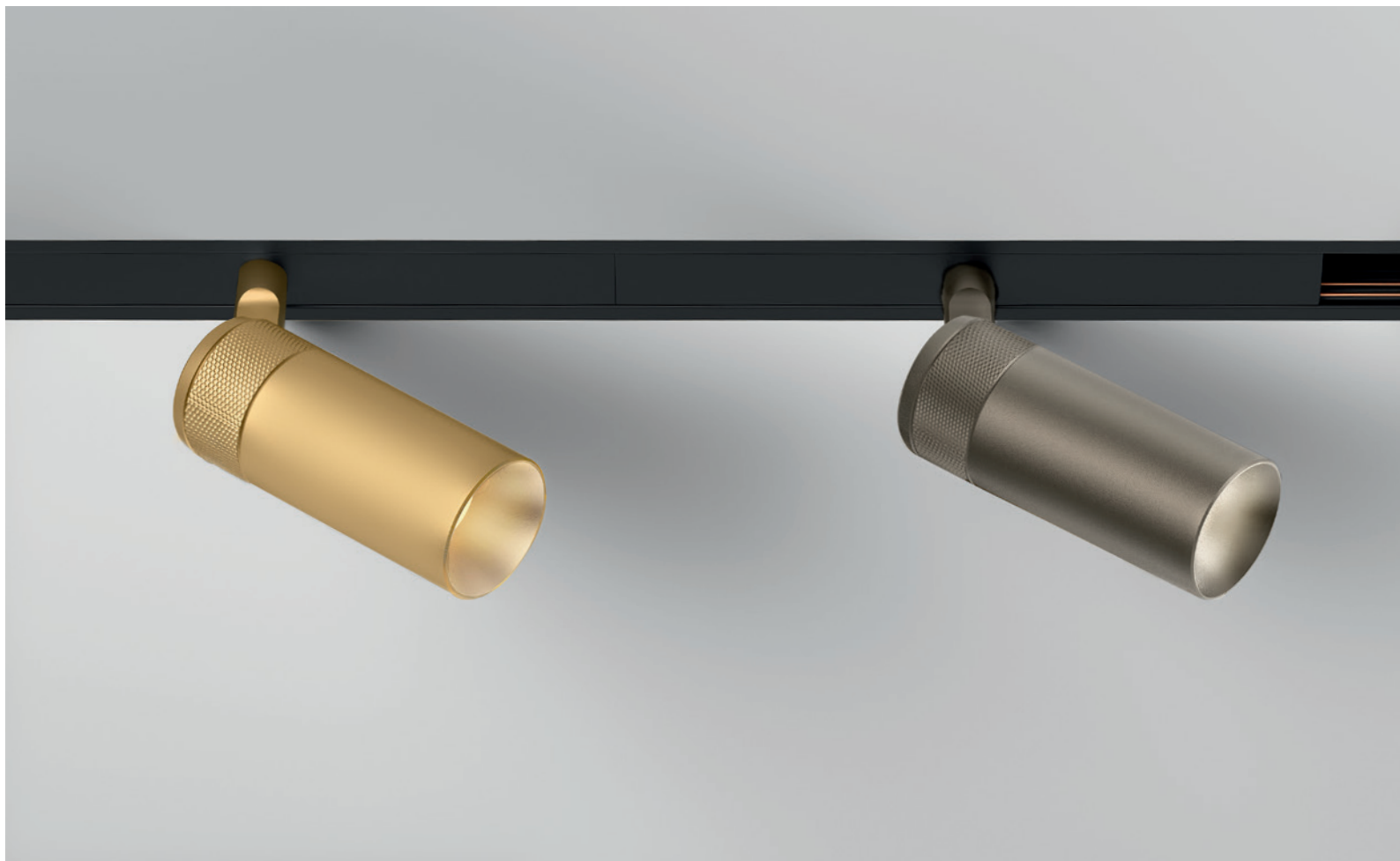


## EYE 35 48V TRACK

Design Filippo Cannata 2018

Faretto spot a LED orientabile in tutte le direzioni, con fascio idoneo ad illuminare un quadro, un oggetto, un tavolo di un ristorante. Il posizionamento del faretto avviene tramite un sistema a binario con attacco magnetico, per spostarlo nell'ambiente in modo semplice e veloce senza la necessità di qualsiasi strumento o personale specializzato.

*Adjustable LED spotlight, projecting a light beam that is ideal for the illumination of a painting, a specific object, or a table at the restaurant. The positioning of the spotlight is carried out through a track system with magnetic coupling in a quick and easy way, without the need for any specific tool or expert staff.*

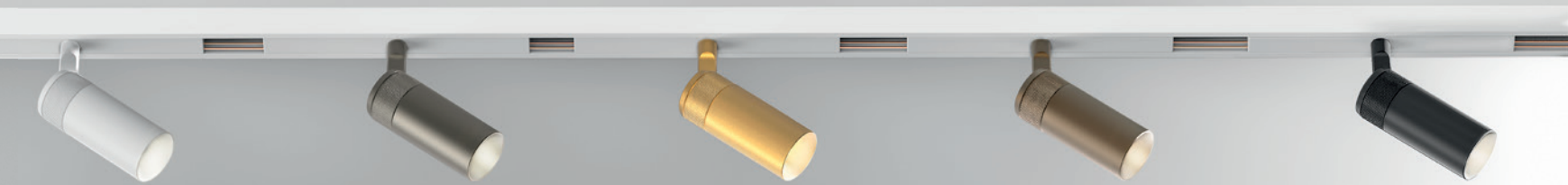




Il posizionamento del faretto avviene tramite un sistema a binario con attacco magnetico.

*The positioning of the spotlight is carried out through a track system with magnetic coupling.*





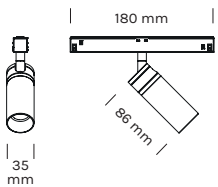
**BI** Bianco *White*


**TI** Titanio *Titanium*

**OR** Oro ricco *Rich gold*

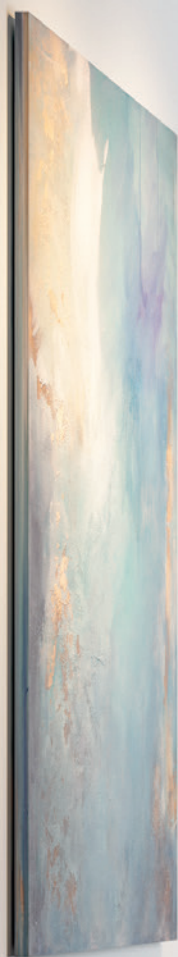
**BZ** Bronzo verniciato *Painted bronze*

**NE** Nero *Black*



**3753** 1 x 5,8W LED - 48V - 480 lm - 3000K CRI 90 15°    
 Alimentatore non incluso *Driver not included*

- BI** Bianco *White*
- BZ** Bronzo verniciato *Painted bronze*
- TI** Titanio *Titanium*
- NE** Nero *Black*
- OS** Ottone spazzolato *Brushed brass*
- OR** Oro ricco *Rich gold*



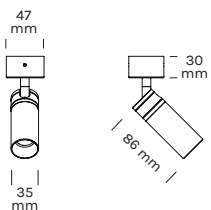




## EYE 35 24V spot singolo base tonda

Design Filippo Cannata 2018

Faretto spot a LED orientabile in tutte le direzioni, con fascio idoneo ad illuminare un quadro, un oggetto, un tavolo di un ristorante. Base tonda per fissaggio su soffitti o pareti di legno, cartongesso o muratura.

Funzionamento in 24v con alimentatore remoto.  
Adjustable 24v LED spotlight, projecting a light beam that is ideal for the illumination of a painting, a specific object, or a table at the restaurant. The round canopy allows for mounting on wood, plasterboard or stonework ceilings and walls. Remote power supply.



**3751** 1 x 5,8W LED - 24V - 480 lm - 3000K CRI 90 15°  

- BI** Bianco *White*
- BZ** Bronzo verniciato *Painted bronze*
- TI** Titanio *Titanium*
- NE** Nero *Black*
- OS** Ottone spazzolato *Brushed brass*
- OR** Oro ricco *Rich gold*

Alimentatore non incluso *Driver not included*





# EYE 35 230V singolo e doppio base rettangolare

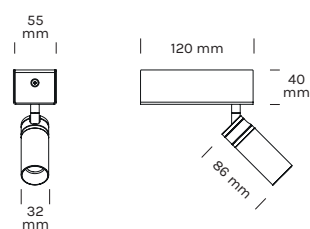
Design Filippo Cannata 2018

Faretto a LED spot orientabile in tutte le direzioni, con fascio idoneo ad illuminare un quadro, un oggetto, un tavolo di un ristorante. Base rettangolare per fissaggio a soffitto o a parete.

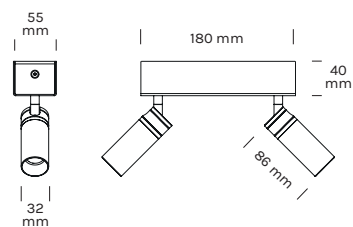
Adjustable LED spotlight, projecting a light beam that is ideal for the illumination of a painting, a specific object, or a table at the restaurant. Rectangular canopy for wall or ceiling mounting.



**3752**



**3754**



**3752** 1 x 5,8W LED - 230V - 480 lm - 3000K CRI 90 15°



**3754** 2 x 5,8W LED - 230V - 2x480 lm - 3000K CRI 90 15°

Alimentatore incluso Driver included

**BI** Bianco White

**BZ** Bronzo verniciato Painted bronze

**TI** Titanio Titanium

**NE** Nero Black

**OS** Ottone spazzolato Brushed brass

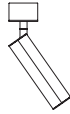
**OR** Oro ricco Rich gold



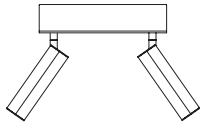
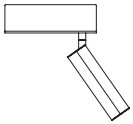




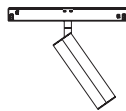
**SHINE**



**SHINE SPOT 24V**  
singolo base tonda



**SHINE SPOT 230V**  
singolo e doppio base rettangolare



**SHINE SPOT 48V TRACK**



**SHINE VERTICAL 48V TRACK**  
sospensione



**SHINE VERTICAL PLUMAGE 48V TRACK**  
sospensione



# SHINE SPOT 230V singolo e doppio base rettangolare

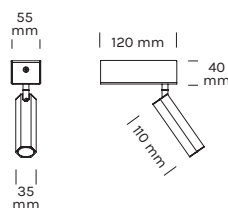
Design Olev Team 2018

Faretto spot a LED orientabile in tutte le direzioni, con fascio idoneo ad illuminare un quadro, un oggetto, un tavolo di un ristorante. Originale design esagonale, disponibile in numerose finiture. Base per fissaggio a soffitto o a parete.

Adjustable LED spotlight, projecting a light beam that is ideal for the illumination of a painting, a specific object, a table at the restaurant. With its original hexagonal design, Shine Spot is available in a wide range of finishes. Canopy for wall or ceiling mounting.



**9352**



**9352** 1 x 5,8W LED - 230V - 480 lm - 3000K CRI 90 15°



**9354** 2 x 5,8W LED - 230V - 2x480 lm - 3000K CRI 90 15°

Alimentatore incluso Driver included

**BI** Bianco White

**BZ** Bronzo verniciato Painted bronze

**TI** Titanio Titanium

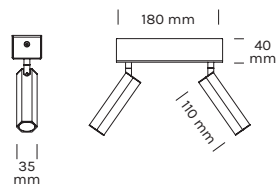
**NE** Nero Black

**OS** Ottone spazzolato Brushed brass

**OR** Oro ricco Rich gold



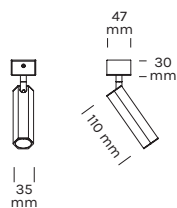
**9354**





## SHINE SPOT 24V singolo base tonda

Design Olev Team 2018



**9351** 1 x 5,8W LED - 24V - 480 lm - 3000K CRI 90 15°



- BI** Bianco *White*
- BZ** Bronzo verniciato *Painted bronze*
- TI** Titanio *Titanium*
- NE** Nero *Black*
- OS** Ottone spazzolato *Brushed brass*
- OR** Oro ricco *Rich gold*

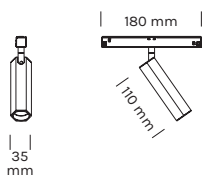
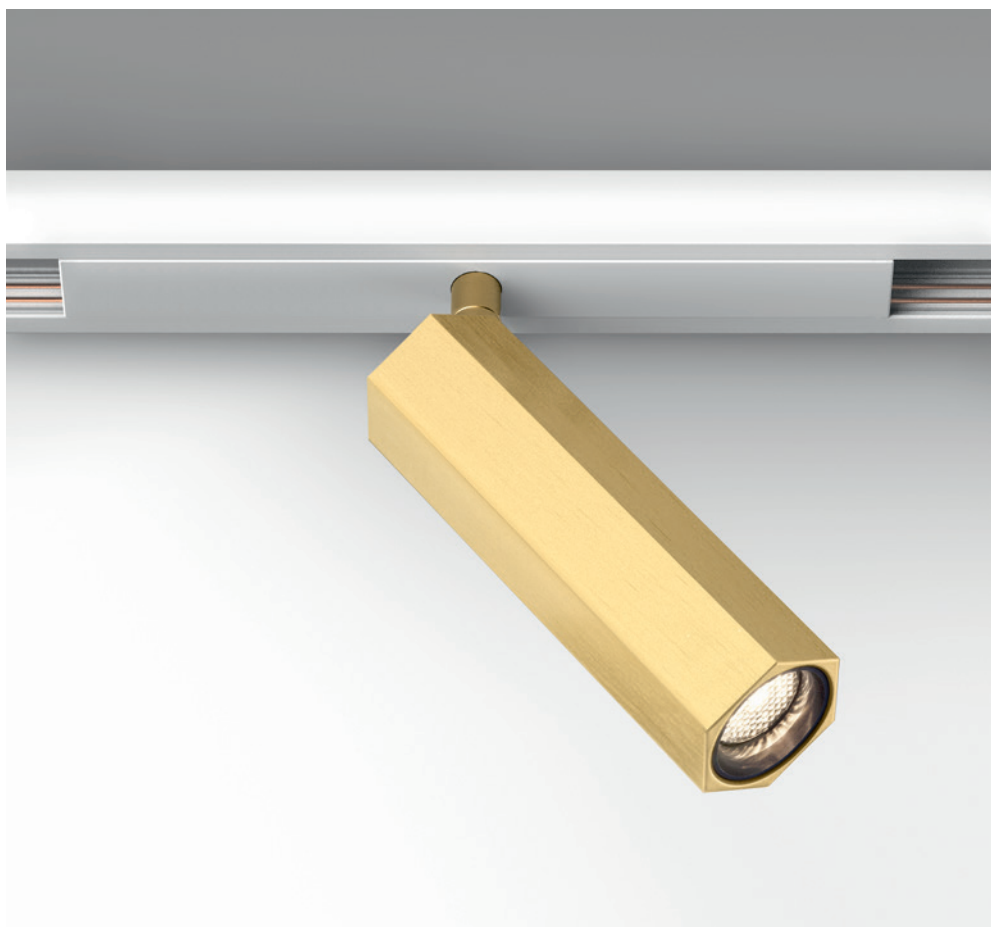
Alimentatore non incluso *Driver not included*



# SHINE SPOT 48V TRACK

Design OLEV TEAM 2018

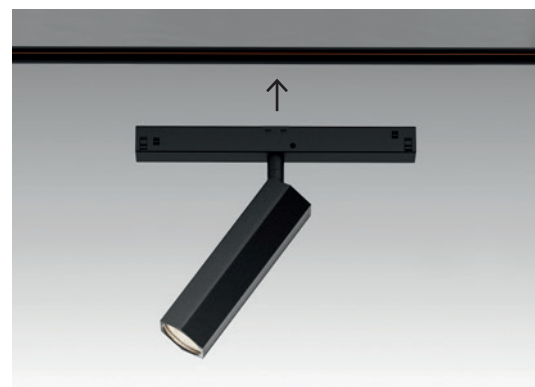
Faretto spot a LED orientabile in tutte le direzioni, con fascio idoneo ad illuminare un quadro, un oggetto, un tavolo di un ristorante. Originale design esagonale, disponibile in numerose finiture. Il posizionamento del faretto avviene tramite un sistema a binario con attacco magnetico, per spostarlo nell'ambiente in modo semplice e veloce senza l'uso di qualsiasi strumento o personale specializzato. *Adjustable LED spotlight, projecting a light beam that is ideal for the illumination of a painting, a specific object, or a table at the restaurant. With its original hexagonal design, Shine Track is available in a wide range of finishes. The positioning of the spotlight is carried out through a track system with magnetic coupling, in a quick and easy way, without the need for any specific tool or expert staff.*



**9353** 1 x 5,8W LED - 48V - 480 lm - 3000K CRI 90 15°



- BI** Bianco White
- BZ** Bronzo verniciato Painted bronze
- TI** Titanio Titanium
- NE** Nero Black
- OS** Ottone spazzolato Brushed brass
- OR** Oro ricco Rich gold







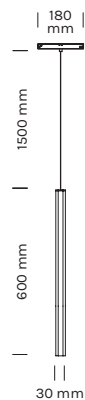


## SHINE VERTICAL 48V TRACK sospensione

Design Michele Marcon, 2016

Sospensione a LED cilindrica dall'originale design esagonale, disponibile in numerose finiture. La luce è proiettata solo verso il basso per creare un fascio idoneo ad illuminare un tavolo di un ristorante. Il posizionamento della lampada avviene tramite un sistema a binario con attacco magnetico, per spostarla nell'ambiente in modo semplice e veloce senza la necessità di qualsiasi strumento o personale specializzato.

*LED pendant lamp with an original hexagonal design, available in a wide range of finishes. The exclusive downward projection creates a light beam that is ideal for the illumination of a table at the restaurant. The positioning of the lamp is carried out through a track system with magnetic coupling in a quick and easy way, without the need for any specific tool or expert staff.*



**9342** 4W LED - 48V - 330 lm - 3000K CRI 90  
Alimentatore incluso Driver included

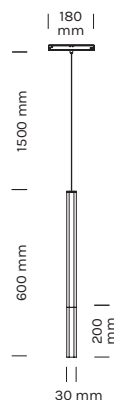


**OS** Ottone spazzolato Brushed brass



## SHINE VERTICAL PLUMAGE 48V TRACK sospensione

Design Michele Marcon, 2016



**9343** 4W LED - 48V - 330 lm - 3000K CRI 90  
Alimentatore incluso Driver included



**OS** Ottone spazzolato Brushed brass









## POLY ESAGONO SOUNDLESS sospensione

Design Michele Marcon, 2016

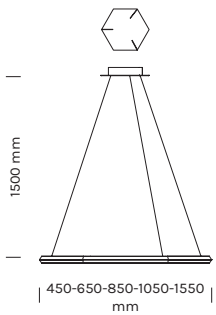
Poly Soundless è l'innovativa versione di Poly Esagono che unisce luce, design e comfort acustico. I pannelli fonoassorbenti inseriti all'interno della lampada a sospensione esagonale biemissione riducono la rumorosità negli ambienti pubblici.

*Poly Soundless is a state-of-the-art lighting solution that combines lighting, design and acoustic comfort technology. This hexagonal pendant lamp diffusing upward and downward light also includes sound-absorbing panels which reduce the noise in public places.*



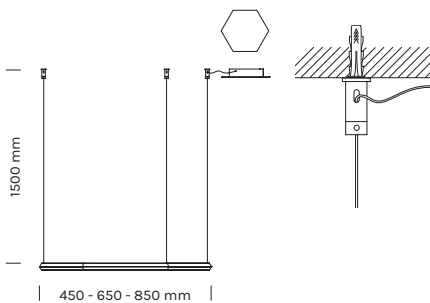


## POLY ESAGONO SOUNDLESS sospensione



Prodotto testato acusticamente  
UNI EN ISO 354:2003

Acoustically tested product  
UNI EN ISO 354:2003



Prodotto testato acusticamente  
UNI EN ISO 354:2003

Acoustically tested product  
UNI EN ISO 354:2003



<b>9360</b>	ø 450 mm	35W LED - 230 Vac - 4284 lm - 3000K CRI 90	 
<b>9361</b>	ø 650 mm	52W LED - 230 Vac - 6426 lm - 3000K CRI 90	
<b>9362</b>	ø 850 mm	69W LED - 230 Vac - 8568 lm - 3000K CRI 90	
<b>9367</b>	ø 1050 mm	86W LED - 230 Vac - 10 710 lm - 3000K CRI 90	
<b>9368</b>	ø 1550 mm	130W LED - 230 Vac - 16 065 lm - 3000k CRI 90	
<b>9460 DTW</b>	ø 450 mm	35W LED - 230 Vac - 4284 lm - 3000K CRI 90	
<b>9461 DTW</b>	ø 650 mm	52W LED - 230 Vac - 6426 lm - 3000K CRI 90	
<b>9462 DTW</b>	ø 850 mm	69W LED - 230 Vac - 8568 lm - 3000K CRI 90	
<b>9467 DTW</b>	ø 1050 mm	86W LED - 230 Vac - 10 710 lm - 3000K CRI 90	
<b>9468 DTW</b>	ø 1550 mm	130W LED - 230 Vac - 16 065 lm - 3000k CRI 90	

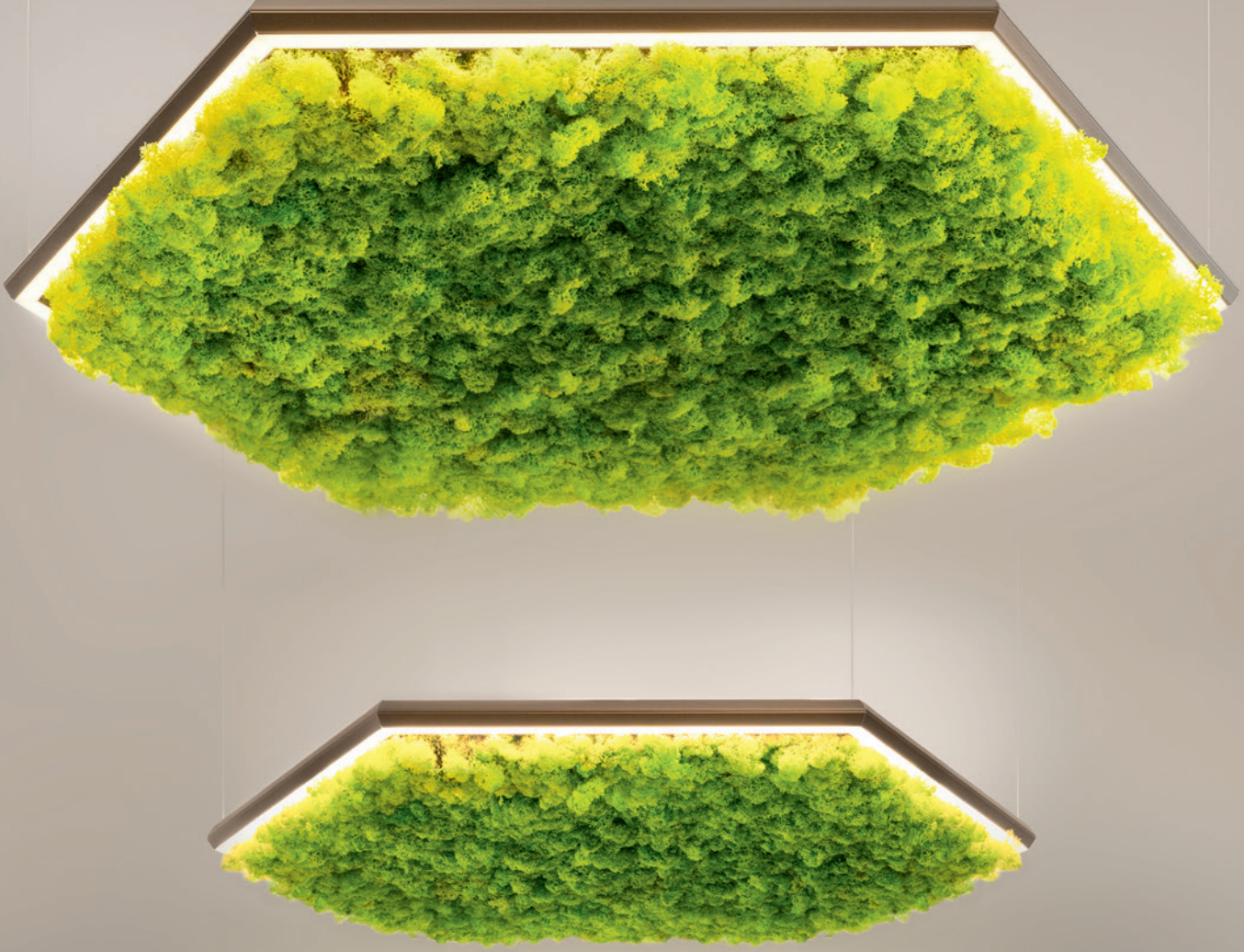
Alimentatore dimmerabile incluso **1 - 10V - Push Dali (Protocollo Casambi a richiesta)**  
Dimmable driver included **1 - 10V - Push Dali (Casambi on request)**

**BR** Brunito *Burnished*  
**OR** Oro ricco *Rich gold*

<b>9370</b>	ø 450 mm	35W LED - 230 Vac - 4284 lm - 3000K CRI 90	 
<b>9371</b>	ø 650 mm	52W LED - 230 Vac - 6426 lm - 3000K CRI 90	
<b>9372</b>	ø 850 mm	69W LED - 230 Vac - 8568 lm - 3000K CRI 90	
<b>9377</b>	ø 1050 mm	86W LED - 230 Vac - 10 710 lm - 3000K CRI 90	
<b>9378</b>	ø 1550 mm	130W LED - 230 Vac - 16 065 lm - 3000k CRI 90	
<b>9470 DTW</b>	ø 450 mm	35W LED - 230 Vac - 4284 lm - 3000K CRI 90	
<b>9471 DTW</b>	ø 650 mm	52W LED - 230 Vac - 6426 lm - 3000K CRI 90	
<b>9472 DTW</b>	ø 850 mm	69W LED - 230 Vac - 8568 lm - 3000K CRI 90	
<b>9477 DTW</b>	ø 1050 mm	86W LED - 230 Vac - 10 710 lm - 3000K CRI 90	
<b>9478 DTW</b>	ø 1550 mm	130W LED - 230 Vac - 16 065 lm - 3000k CRI 90	

Alimentatore dimmerabile incluso **1 - 10V - Push Dali (Protocollo Casambi a richiesta)**  
Dimmable driver included **1 - 10V - Push Dali (Casambi on request)**

**BR** Brunito *Burnished*  
**OR** Oro ricco *Rich gold*







3200 K 100% LUX



VIDEO

## DIM TO WARM TECHNOLOGY

La tecnologia dim-to-warm crea atmosfere intime e rilassate di luce calda abbassando l'intensità luminosa.

*The dim-to-warm lighting technology creates a cosy and relaxed atmosphere where the colour temperature gets warmer as it's dimmed.*



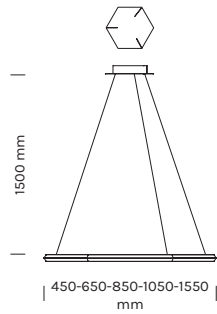
**3000 K 100% LUX**



**Oro ricco,**  
finitura moderna e di tendenza,  
con un sapore vagamente retrò.

**Rich gold,**  
a modern and trendy finish,  
with a slight retro feel.

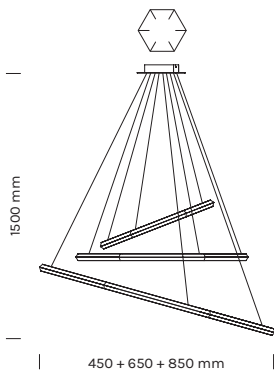






<b>9310</b>	ø 450 mm	35W LED - 230 Vac - 4284 lm - 3000K CRI 90	 
<b>9311</b>	ø 650 mm	52W LED - 230 Vac - 6426 lm - 3000K CRI 90	
<b>9312</b>	ø 850 mm	69W LED - 230 Vac - 8568 lm - 3000K CRI 90	
<b>9317</b>	ø 1050 mm	86W LED - 230 Vac - 10 710 lm - 3000K CRI 90	
<b>9318</b>	ø 1550 mm	130W LED - 230 Vac - 16 065 lm - 3000k CRI 90	
<b>9410 DTW</b>	ø 450 mm	35W LED - 230 Vac - 4284 lm - 3000K CRI 90	
<b>9411 DTW</b>	ø 650 mm	52W LED - 230 Vac - 6426 lm - 3000K CRI 90	
<b>9412 DTW</b>	ø 850 mm	69W LED - 230 Vac - 8568 lm - 3000K CRI 90	
<b>9417 DTW</b>	ø 1050 mm	86W LED - 230 Vac - 10 710 lm - 3000K CRI 90	
<b>9418 DTW</b>	ø 1550 mm	130W LED - 230 Vac - 16 065 lm - 3000k CRI 90	

Alimentatore dimmerabile incluso **1 - 10V - Push Dali (Protocollo Casambi a richiesta)**  
 Dimmable driver included **1 - 10V - Push Dali (Casambi on request)**

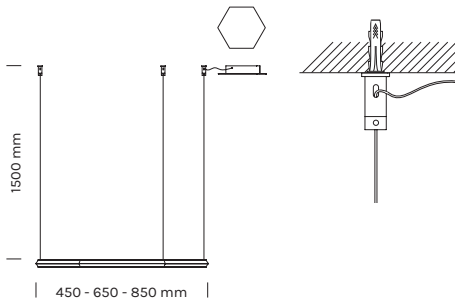
**BR** Brunito *Burnished*  
**OR** Oro ricco *Rich gold*



<b>9313</b>	ø 450 mm	32W LED - 230 Vac - 4284 lm - 3000K CRI 85	 
	ø 650 mm	52W LED - 230 Vac - 6426 lm - 3000K CRI 90	
	ø 850 mm	69W LED - 230 Vac - 8568 lm - 3000K CRI 90	

Alimentatore dimmerabile incluso **1 - 10V - Push Dali (Protocollo Casambi a richiesta)**  
 Dimmable driver included **1 - 10V - Push Dali (Casambi on request)**

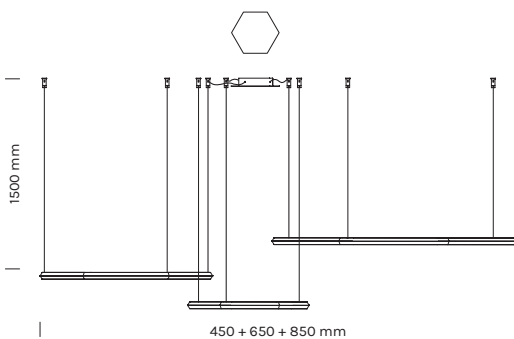
**BR** Brunito *Burnished*  
**OR** Oro ricco *Rich gold*





<b>9320</b>	ø 450 mm	35W LED - 230 Vac - 4284 lm - 3000K CRI 90	 
<b>9321</b>	ø 650 mm	52W LED - 230 Vac - 6426 lm - 3000K CRI 90	
<b>9322</b>	ø 850 mm	69W LED - 230 Vac - 8568 lm - 3000K CRI 90	
<b>9327</b>	ø 1050 mm	86W LED - 230 Vac - 10 710 lm - 3000K CRI 90	
<b>9328</b>	ø 1550 mm	130W LED - 230 Vac - 16 065 lm - 3000k CRI 90	
<b>9420 DTW</b>	ø 450 mm	35W LED - 230 Vac - 4284 lm - 3000K CRI 90	
<b>9421 DTW</b>	ø 650 mm	52W LED - 230 Vac - 6426 lm - 3000K CRI 90	
<b>9422 DTW</b>	ø 850 mm	69W LED - 230 Vac - 8568 lm - 3000K CRI 90	
<b>9427 DTW</b>	ø 1050 mm	86W LED - 230 Vac - 10 710 lm - 3000K CRI 90	
<b>9428 DTW</b>	ø 1550 mm	130W LED - 230 Vac - 16 065 lm - 3000k CRI 90	

Alimentatore dimmerabile incluso **1 - 10V - Push Dali (Protocollo Casambi a richiesta)**  
 Dimmable driver included **1 - 10V - Push Dali (Casambi on request)**

**BR** Brunito *Burnished*  
**OR** Oro ricco *Rich gold*



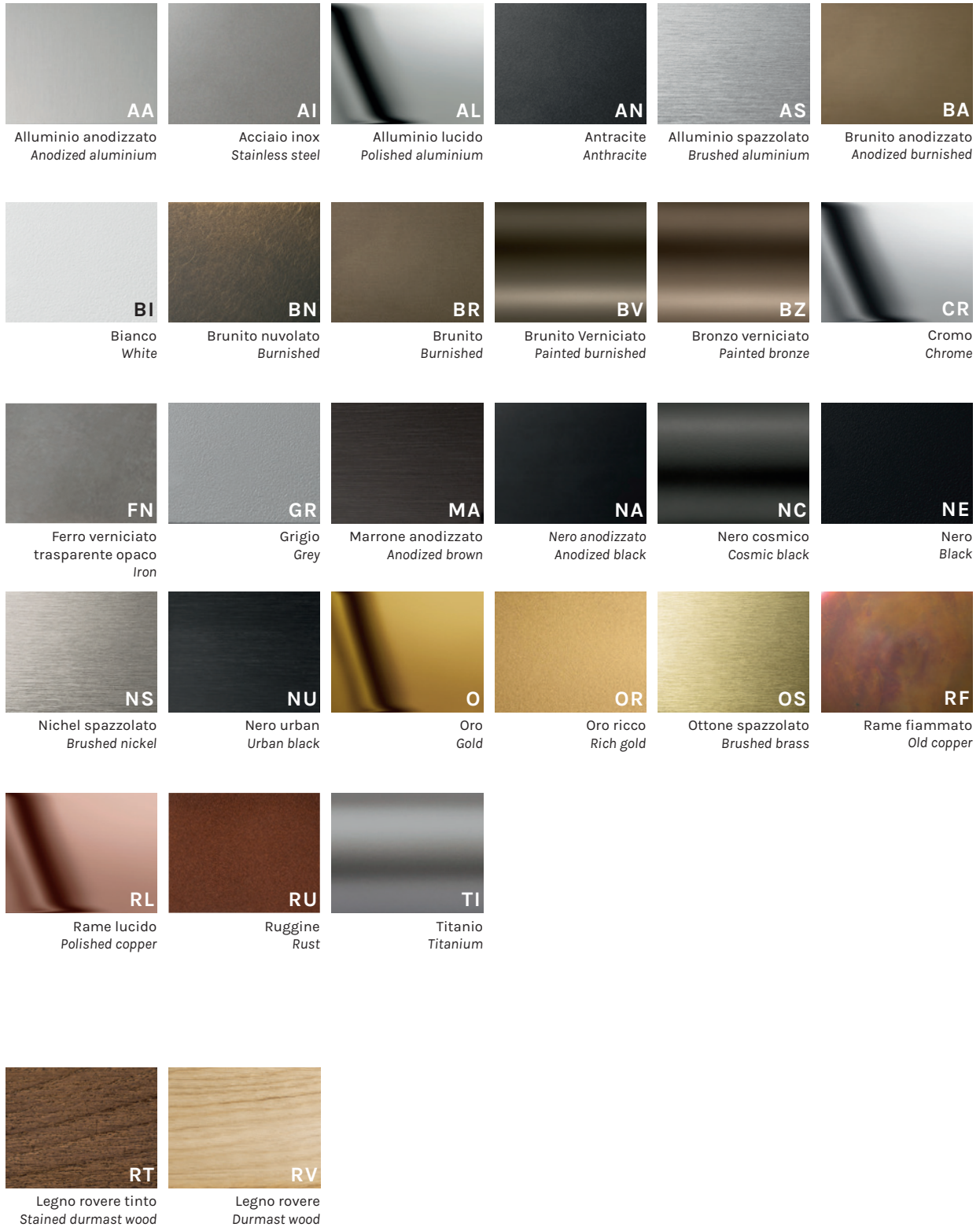
<b>9323</b>	ø 450 mm	35W LED - 230 Vac - 4284 lm - 3000K CRI 90	 
	ø 650 mm	52W LED - 230 Vac - 6426 lm - 3000K CRI 90	
	ø 850 mm	69W LED - 230 Vac - 8568 lm - 3000K CRI 90	

Alimentatore dimmerabile incluso **1 - 10V - Push Dali (Protocollo Casambi a richiesta)**  
 Dimmable driver included **1 - 10V - Push Dali (Casambi on request)**








**BR** Brunito *Burnished*  
**OR** Oro ricco *Rich gold*



FINITURE FINISHES



## SIMBOLI SYMBOLS

-  Europee EN 605981  
*Compliant with EN 605981*
-  CLASSE I: Apparecchi con parti metalliche costantemente collegate al circuito di terra.  
*CLASS I: Equipment with metal parts constantly connected to the earth circuit.*
-  CLASSE II: Apparecchi con parti in tensione isolate tra loro e verso l'esterno con un doppio isolamento e senza dispositivi di massa a terra.  
*CLASS II: Equipment with live parts insulated from one other and from outside with double insulation and without earthing devices DALI.*
-  CLASSE III: Apparecchi alimentati con tensione di sicurezza inferiore ai 50V.  
*CLASS III: Equipment powered with safety voltage lower than 50V.*
- IP55** Grado di protezione.  
*Protection degree.*
-  Apparecchio con tecnologia LED.  
*Equipment with LED technology.*
-  Dimensione del foro quadro da praticare.  
*Hole dimension.*
-  Diametro del foro tondo da praticare.  
*Hole diameter.*
- DTW** Apparecchio con tecnologia Dim To Warm.  
*Lighting fixture with Dim To Warm technology.*
- TOUCH** Apparecchio con accensione e spegnimento controllati mediante una funzione touch.  
*Lighting fixture with On/Off touch switch.*
- RIV** Apparecchio dotato di rilevatore di presenza.  
*Lighting fixture with presence sensor.*

I disegni, le quote, i materiali ed i colori del presente catalogo si intendono a titolo indicativo. Nell'interesse della clientela, l'Azienda si riserva il diritto di modificare i modelli in ogni momento senza l'obbligo di preavviso.

*The drawings, dimensions, materials and colours in this catalogue are for informational purposes only. In the interest of its clientele, the Company reserves the right to make changes to models at any time without prior warning.*





via del Progresso, 40  
36060 Molvena (VI)  
T +39 0424 410092  
F +39 0424 418609  
info@olevlight.com  
[olevlight.com](http://olevlight.com)

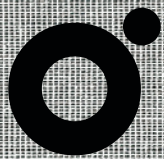


© CLM S.r.l.  
AD\_Piero Simonetto [INTOTHEDESIGN.IT](http://INTOTHEDESIGN.IT)  
Prepress\_ [INTOTHEDESIGN](http://INTOTHEDESIGN)  
Photo\_ [INTOTHEDESIGN](http://INTOTHEDESIGN) - Tommy Ilai  
Print\_ [Asolana Group](http://Asolana Group)  
September 2018

È vietata la riproduzione anche parziale di questo catalogo  
*It is forbidden to reproduce any part of this catalogue*







OLEV

SOLO LED  
SOLO DESIGN

[olevlight.com](http://olevlight.com)